



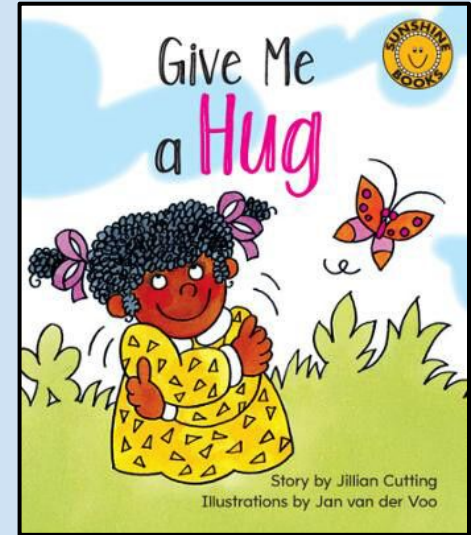
Poihipi Team - Reading - Level 1 - (easy)

Learning Intention: I am learning to point to the words as I read. I am learning to recognise letter sounds.

Give Me a Hug

Before reading:

- Look at the front cover. Give your family a hug before you start.
- Click on the picture to follow the link to the book.
- You can try to read by yourself or listen to it being read.
- Complete the [WORDS](#) activity.
- Complete the [THINKING](#) activity.
- Who do you like giving hugs to?
- Who gives you hugs?



Added Extras: Click on [here](#) for the activity.

Scroll through the following pages to find different reading levels and more activities.



Learning Intention: I am learning to point to the words as I read. I am learning to recognise letter sounds. I recognise speech marks.

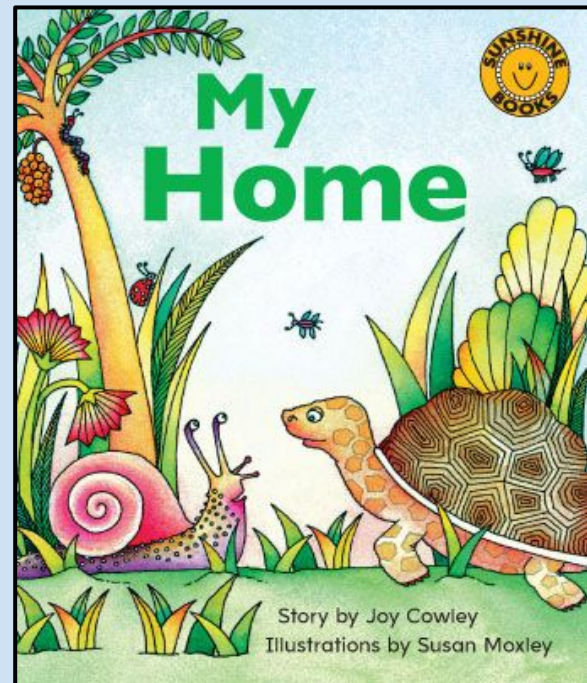
My Home

Before reading:

- Look at the front cover. What does your home look like?
- Click on the picture to follow the link to the book.
- You can try to read by yourself or get a family member to help you.
- Complete the [WORDS](#) activity.
- Complete the [THINKING](#) activity.

After reading:

- What is a spider's home?
- What is a bird's home?
- What is a snail's home?



Added Extra: Design your own home. What would it be? Could it be a castle or a cave?



Learning Intention: I am reading through the word. I use expression when I see speech marks and exclamation marks.

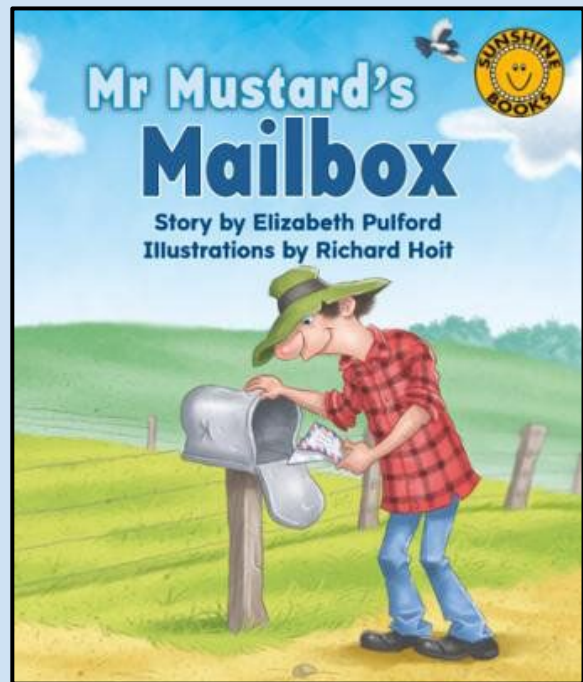
Mr Mustard's Mailbox

Before reading:

- Look at the front cover. Do you have a mailbox? What does it look like? What things get delivered to your mailbox?
- Click on the picture to follow the link to the book.
- You can try to read by yourself or get a family member to help you.
- Complete the [WORDS](#) activity.
- Complete the [RECORD](#) activity. Listen to yourself read a couple of pages.

After reading:

- What did Mr Mustard "Shoo!" out of his letterbox?
- Why shouldn't birds build nests in letterboxes?



Added Extra: Design your own letterbox. Remember to write your number on it.